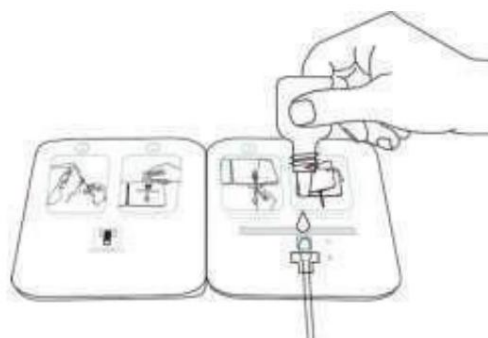
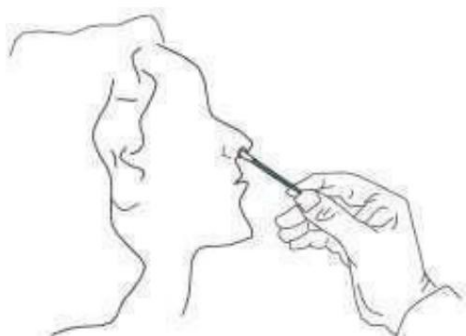
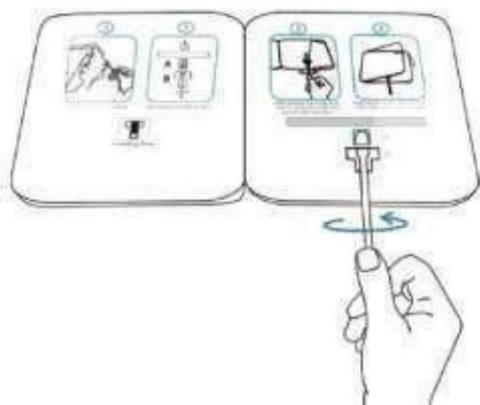


Use the website

- Take a sample with a swab:
- Insert the swab head completely into the nostril and turn it gently 5 times.
Take the same sample from the second nostril in the same way to make sure that you have **taken a sufficient number of samples**.
- Insert the swab through well B into well A and add 6 drops of buffer.
in the garden A.

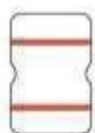


- Turn the lever twice to the right and left.
- Remove the protective cover of the fastening adhesive. Glue the left and right sides, and wait 15 minutes.



You can read the test result in a few minutes¹⁵

Pozitivní
(+)



Negativní
(-)



Neplatný

